

Meet Today's Webinar Team



Presenter: Ashley Mikytuck

Ashley is a technical writer for Texas Mutual's safety services department. She joined the safety services support center in early 2015 as a safety representative and is now assisting the department with written safety content. Ashley holds a bachelor's degree in urban studies from the University of Texas.



Presenter: Laurelle Bednar

Laurelle is a training consultant for Texas Mutual's safety services department. She conducts webinars, presentations and creates e-Learning content for our policyholders and internal departments. Laurelle holds a bachelor's and master's degree in anthropology from California State University Fullerton.



Moderator: Hannah Bolton

Hannah is a safety services representative for Texas Mutual's safety services support center. She conducts phone surveys, internal support for the safety services department, and provides policyholder services by providing guidance in their safety endeavors. Hannah has a degree in Communications from Texas A & M University, Corpus Christi.

PPE: Last Line of Defense

TexasMutual[®]
WORKERS' COMPENSATION INSURANCE
WORK SAFE, TEXASSM



Agenda



OSHA requirements



PPE hazard assessment



Types of PPE



Tips to encourage PPE usage

OSHA requirements



TexasMutual®
WORKERS' COMPENSATION INSURANCE
WORK SAFE, TEXAS™



Employers obligations



Employee obligations



General Industry (29 CFR 1910)

- [1910.94, Ventilation \[related topic page\]](#)
- [1910.95, Occupational noise exposure \[related topic page\]](#)
- [1910.120, Hazardous waste operations and emergency response \[related topic page\]](#)
- [1910.132, General requirements \(Personal protective equipment\)](#)
- [1910.133, Eye and face protection \[related topic page\]](#)
- [1910.134, Respiratory protection \[related topic page\]](#)
- [1910.135, Head protection](#)
- [1910.136, Foot protection](#)
- [1910.137, Electrical protective equipment](#)
- [1910.138, Hand protection](#)
- [1910.140, Personal fall protection systems](#)
- [1910 Subpart I - Appendix A, References for further information \(Non-mandatory\)](#)
- [1910 Subpart I - Appendix B, Non-mandatory compliance guidelines for hazard assessment and personal protective equipment selection](#)
- [1910.146, Permit-required confined spaces \[related topic page\]](#)
- [1910.252, General requirements \(Welding, cutting, and brazing\) \[related topic page\]](#)
- [1910 Subpart Z, Toxic and hazardous substances \[related topic page\]](#)

Construction Industry (29 CFR 1926)

- 1926 Subpart C, General safety and health provisions
 - 1926.28, Personal protective equipment
- 1926 Subpart E, Personal protective and life saving equipment
 - 1926.95, Criteria for personal protective equipment
 - 1926.96, Occupational foot protection
 - 1926.100, Head protection
 - 1926.101, Hearing protection
 - 1926.102, Eye and face protection
 - 1926.103, Respiratory protection
 - 1926.104, Safety belts, lifelines, and lanyards
 - 1926.105, Safety nets
 - 1926.106, Working over or near water
 - 1926.107, Definitions applicable to this subpart
- 1926 Subpart M, Fall protection [[related topic page](#)]
 - 1926.500, Scope, application, and definitions applicable to this subpart
 - 1926.501, Duty to have fall protection
 - 1926.502, Fall protection systems criteria and practices
 - 1926.503, Training requirements
- 1926 Subpart P, Excavations [[related topic page](#)]
 - 1926.651, Specific excavation requirements
 - 1926.652, Requirements for protective systems

Who pays for PPE?



What you don't
have to pay for



PPE Hazard Assessment



TexasMutual[®]
WORKERS' COMPENSATION INSURANCE
WORK SAFE, TEXASSM



General information

Department: [Click here to enter text](#)

Location: enter text

Jobs included in the assessment: enter text

Person performing assessment: enter text

Assessment date: pick date

Hazard assessment certification

I certify that I performed this hazard assessment on the date indicated.

Signed: _____ Date: pick date
Type name here

What is a hazard assessment?

	Required?	
	Yes	No
Attached assessment worksheets	<input type="checkbox"/>	<input type="checkbox"/>
	<input type="checkbox"/>	<input type="checkbox"/>
Protection	<input type="checkbox"/>	<input type="checkbox"/>
	<input type="checkbox"/>	<input type="checkbox"/>
	<input type="checkbox"/>	<input type="checkbox"/>
	<input type="checkbox"/>	<input type="checkbox"/>
on	<input type="checkbox"/>	<input type="checkbox"/>
Protection	<input type="checkbox"/>	<input type="checkbox"/>
Respiratory protection	<input type="checkbox"/>	<input type="checkbox"/>



Conduct walk
through

HAZARD LIST

MADE SAFE SCREENS  **INGREDIENTS FOR KNOWN:**

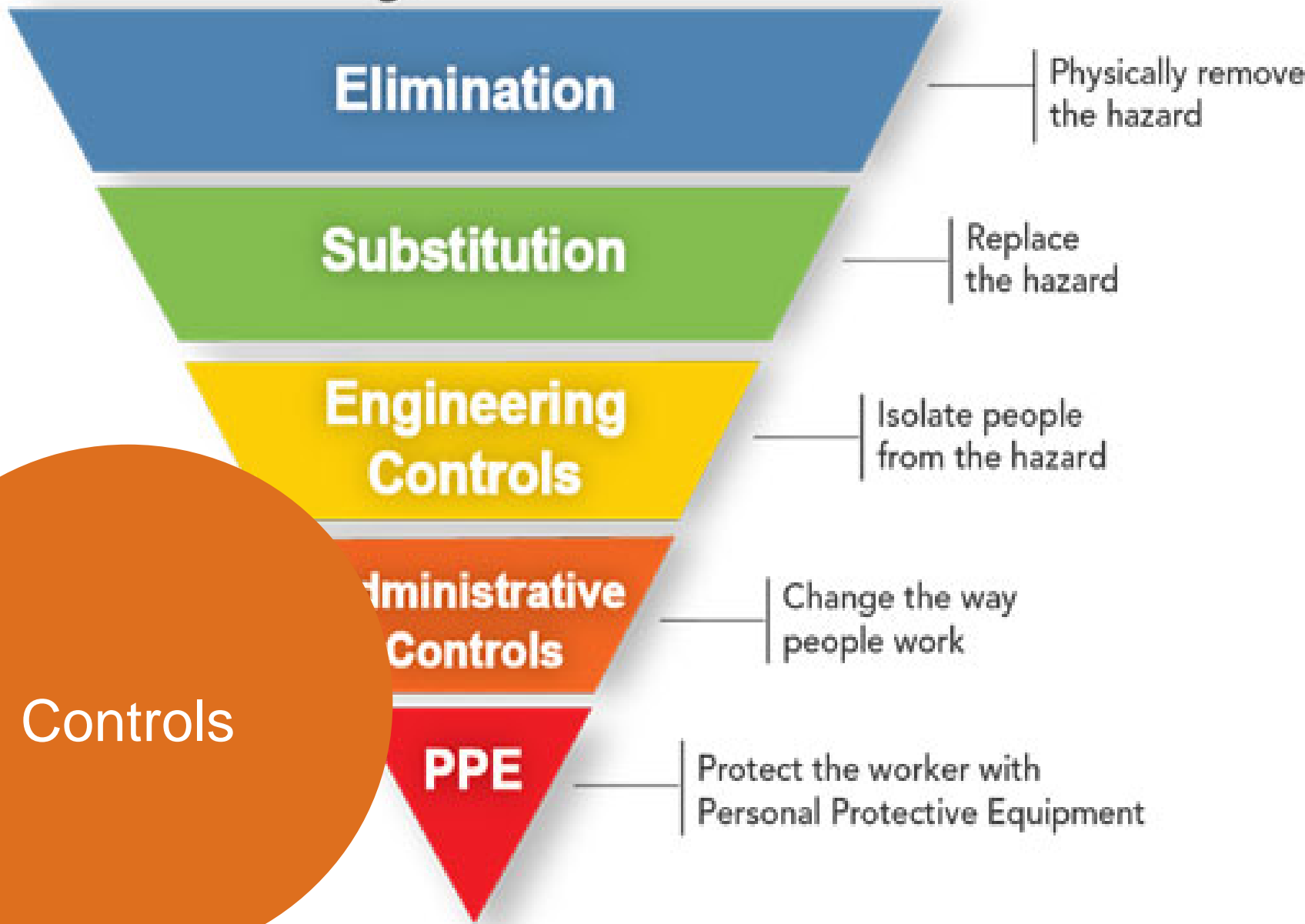
- ✓ BEHAVIORAL TOXINS
- ✓ CARCINOGENS
- ✓ DEVELOPMENTAL TOXINS
- ✓ ENDOCRINE DISRUPTORS
- ✓ FIRE RETARDANTS
- ✓ HEAVY METALS
- ✓ NEUROTOXINS
- ✓ HIGH RISK PESTICIDES
- ✓ REPRODUCTIVE TOXINS
- ✓ TOXIC SOLVENTS
- ✓ HARMFUL VOCs



List hazards

Hierarchy of Controls

Most effective



Controls

Least effective



PPE selection

Health & Safety Risk Assessment

Description of task:	Assessed by:	Assessment No:
Location:	Date:	Review Date:

Hazard	How might harm be caused	Persons at risk	Existing control measures	Risk rating			Proposed control measures (if any)
				S	L	R	



Recordkeeping

Types of PPE

Common Types of PPE to Help Protect Workers



Head, Eye & Face Protection



Respiratory Protection



Protective Clothing



Hearing Protection



Fall Protection

TexasMutual[®]
WORKERS' COMPENSATION INSURANCE
WORK SAFE, TEXASSM



Eye and face
protection





Safety glasses



Goggles



Welding shield



Face shields



Image courtesy of Dublin Safety Solutions

Head protection



Hard hats



Hearing protection



Foot protection



Non slip footwear



Safety shoes



Hand protection



Gloves



Fall protection



Skin protection



Outerwear



Respirators

Encouraging PPE Use



TexasMutual[®]
WORKERS' COMPENSATION INSURANCE
WORK SAFE, TEXASSM





Proactive



Explain importance



Employee involvement



Employee input



Proper use and fit



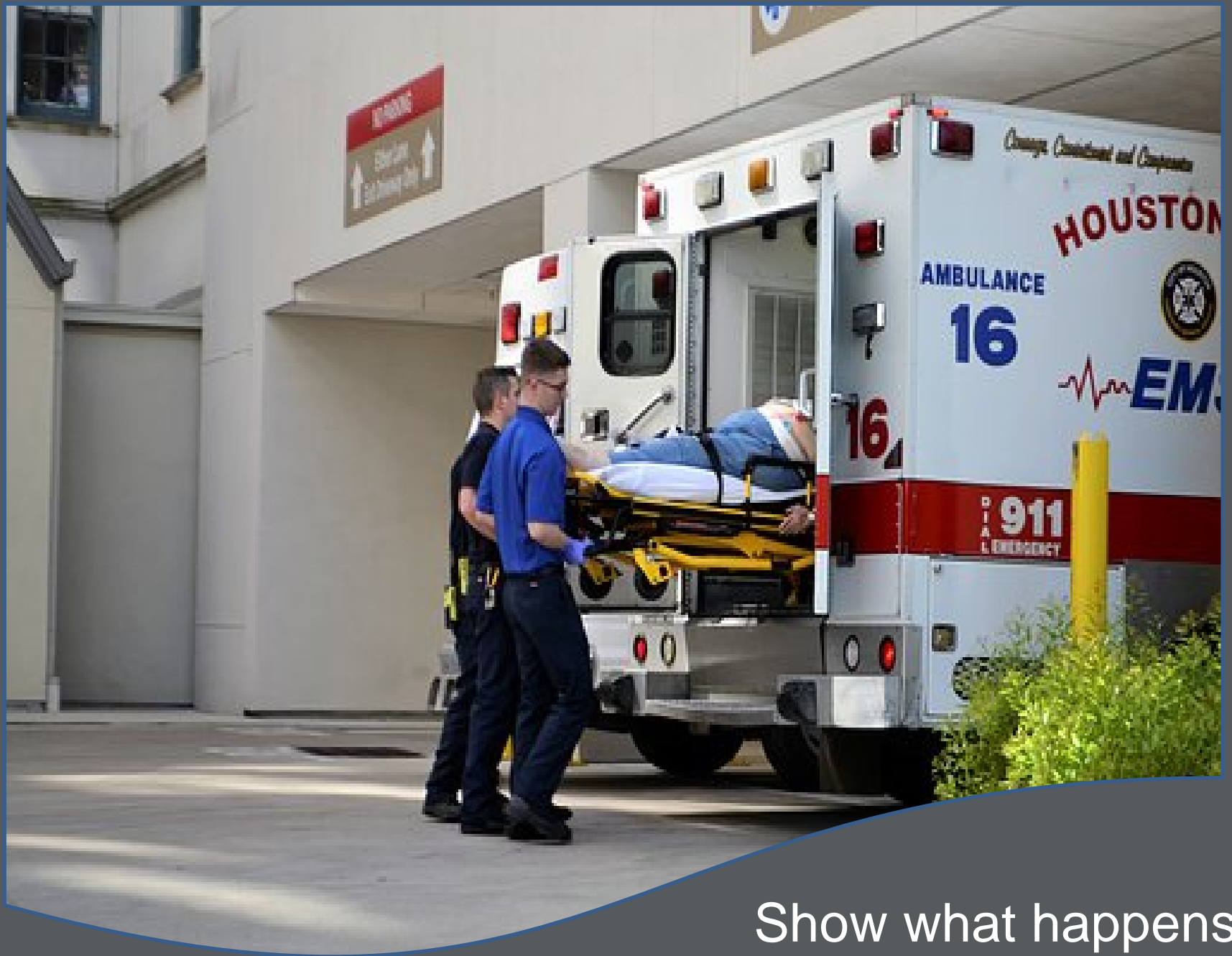
Lead by example



Regular maintenance



Enforce policies

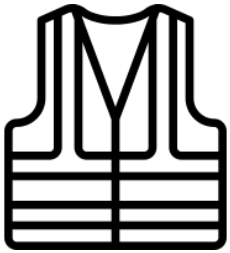


Show what happens

Take aways



Performing hazard inspections



Types of PPE



PPE best practices



TexasMutual[®]
WORKERS' COMPENSATION INSURANCE
WORK SAFE, TEXASSM



Thank You

TexasMutual[®]
WORKERS' COMPENSATION INSURANCE
WORK SAFE, TEXASSM

